

## How to change the drive letter on your thumb drive, so it will work in the school's computer lab:

### Step # 1

You must have your thumb drive plugged into the computer

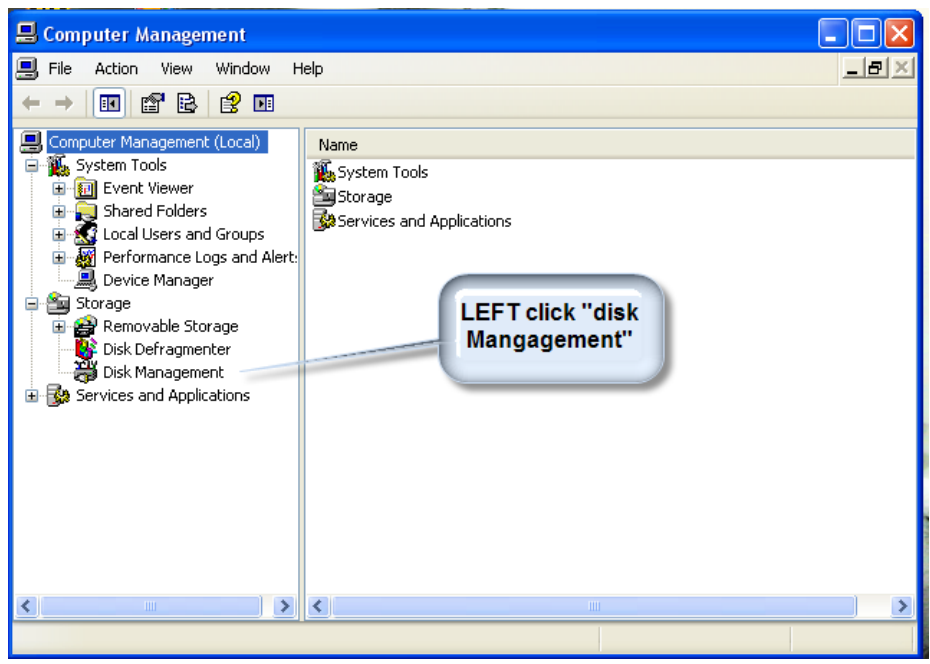
### Step # 2



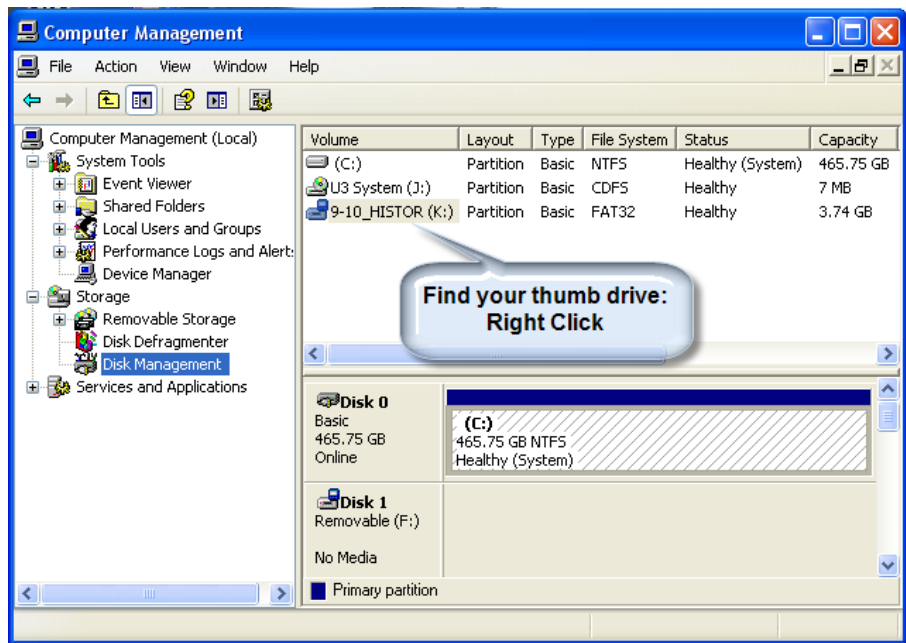
### Step # 3



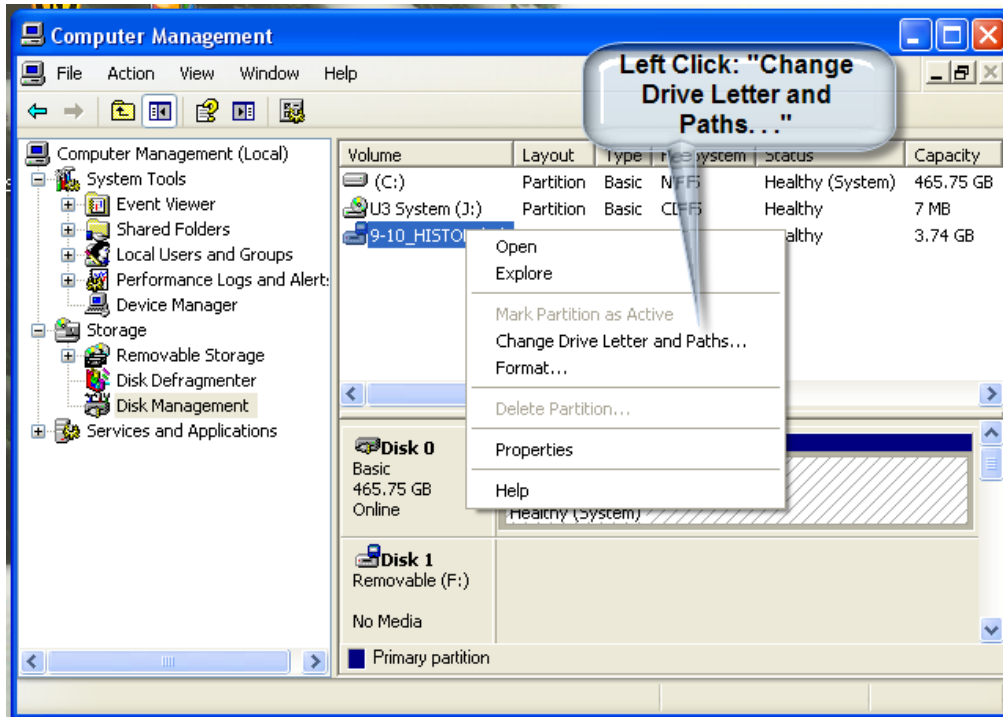
### Step #4



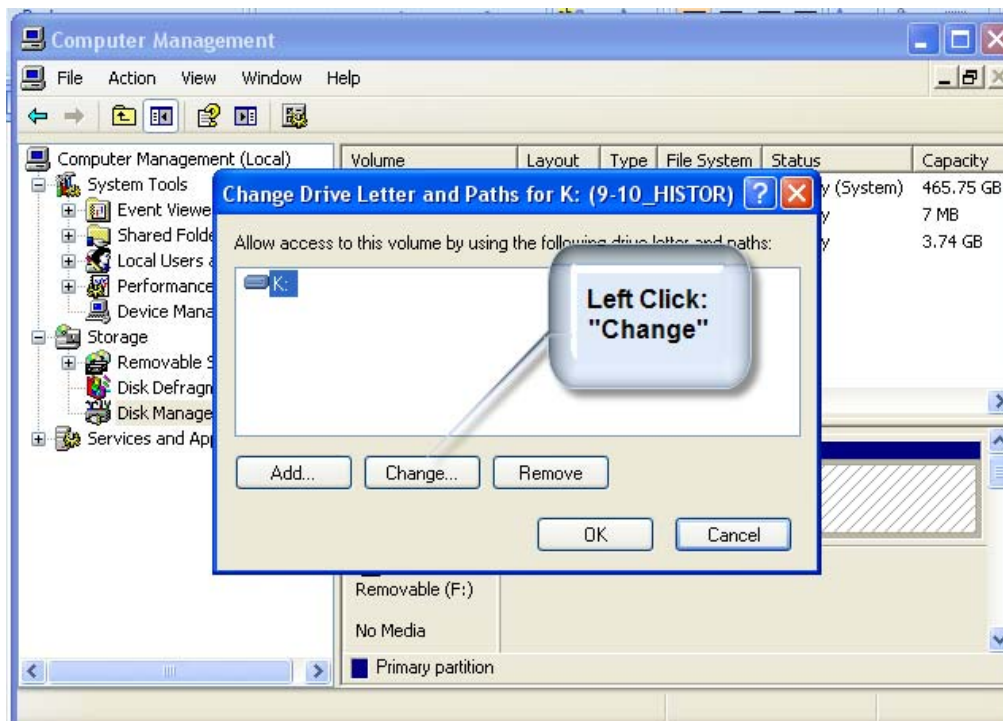
### Step #5

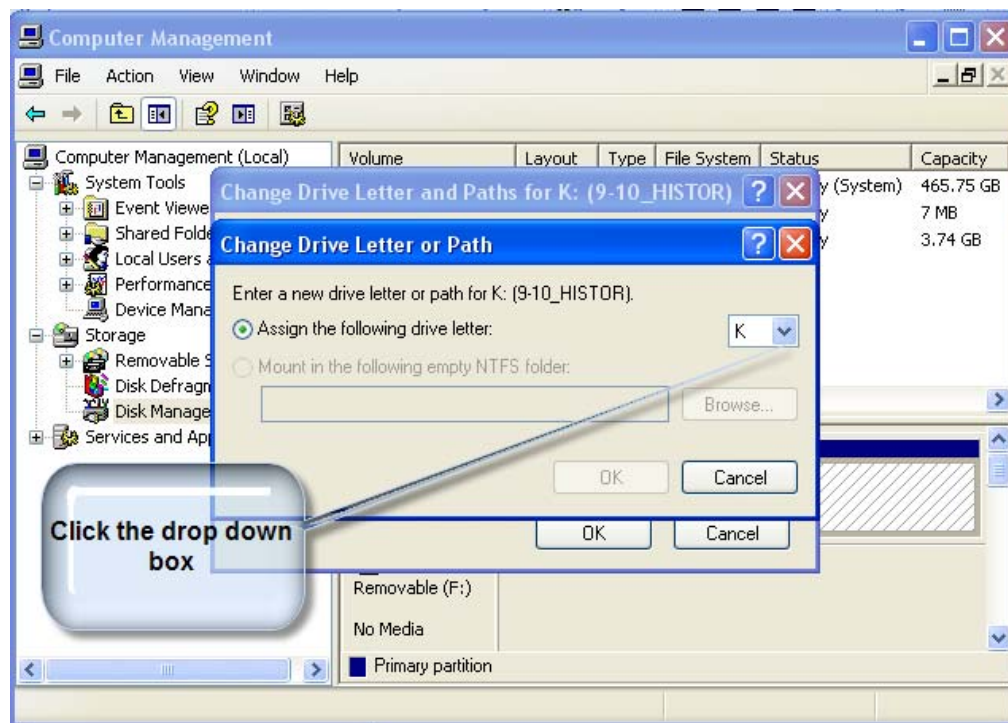


## Step #6



## Step #7



**Step #8****Step #9 – Choose “Y” or “Z” DO NOT USE “X”. The school uses it!**